

---

## Louis Comfort Tiffany

was an American artist and designer who worked in the decorative arts and is best known for his work in stained glass. He is the American artist most associated with the Art Nouveau and Aesthetic movements. He was affiliated with a prestigious collaborative of designers known as the Associated Artists, which included Lockwood de Forest, Candace Wheeler and Samuel Colman. Tiffany designed stained glass windows and lamps, glass mosaics, blown glass, ceramics, jewelry, enamels, and metalwork. He was the first Design Director at his family company, Tiffany & Co., founded by his father Charles Lewis Tiffany.

---

---

# COCKTAILS

---

## ROSELLE'S PILLOW

London dry gin, white rum, raspberry  
liqueur, homemade hibiscus shrub,  
lemon and perfume

138



## DRAGON'S PEARLS

Floral gin, brandy, creme de cassis,  
and jasmine milk tea

138



## BUDDHA'S BEST SIP

Tequila, Campari, redcurrant,  
cranberry, kaffir leaves, lime,  
drops of tabasco and slim tonic

148



## PIXIE PUNCH

Adzuki bean gin, sweet vermouth,  
coconut water, maraschino,  
orange essence, topped with  
coconut taro foam

148



# COCKTAILS



## DON'T LAME CHAR

Irish single-malt whiskey, earl grey,  
darjeeling, oleo-saccharum and lemon  
158

## MISTY MARTINI

Duck fat-washed tequila, mezcal,  
vermouth, lychee, cucumber, roasted  
oolong, soy & oyster solution

148



## WHITE NEGRONI

Plymouth Gin, Lillet and Suze

138

---



# COCKTAILS



## COFFEE MUSE

Jägermeister, Mr Black coffee  
amaro, spiced pineapple and lime

148

## THE MEDITERRANEAN

Pea shoot sous-vide aquavit, homemade  
peach cordial, broth, sesame oil droplet,  
lemon and slim tonic

158



## MONKEY JONES

Pineapple rum, coconut rum,  
homemade falernum, organic  
coconut water, fat-washed with  
peanut butter

148

---



# COCKTAILS

---



## LUMINO

Gin, basil, white peach vinegar,  
lemon and tonic

138

## FOXY MUSE

Sake, honeydew melon ball, clarified  
cucumber, light tonic and citrus acid  
(low ABV)

138



## FIREFLY

Vodka, cardamom and arugula syrup,  
apricot liqueur, lime and prosecco

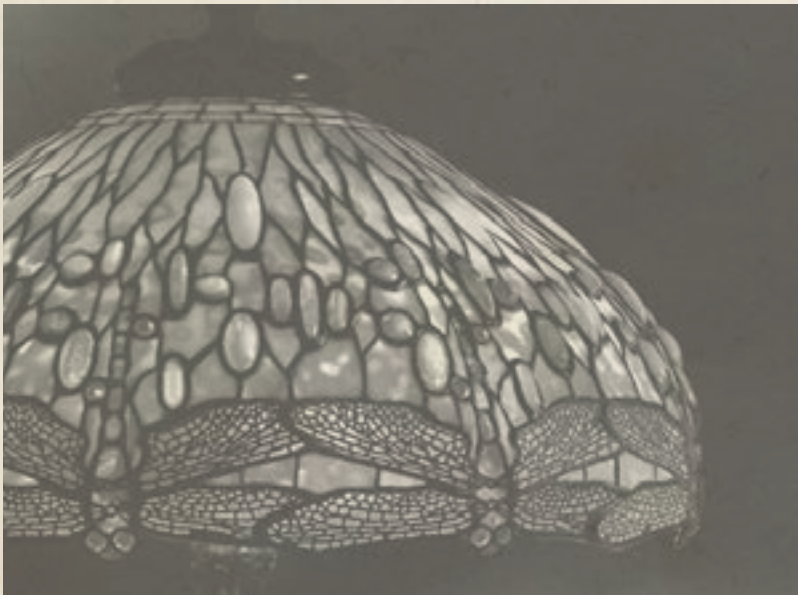
138

Please feel free to order your favourite classic concoction,  
or tell your server your taste preferences





*Lamp Shop, Tiffany Studios*



*Dragonfly Lamp*

---



# RED WINES



---

|                                                         | <i>Glass</i> | <i>Bottle</i> |
|---------------------------------------------------------|--------------|---------------|
| Stark-Conde, Cabernet Sauvignon,<br><i>South Africa</i> | 128          | 580           |
| Bourgogne, Pinot Noir,<br><i>France</i>                 | 138          | 630           |
| Baron de Rey, Rioja Reserva,<br><i>Spain</i>            |              | 720           |
| Chateau Lideyre, Merlot,<br><i>France</i>               |              | 720           |

# WHITE WINES



---

|                                                          | <i>Glass</i> | <i>Bottle</i> |
|----------------------------------------------------------|--------------|---------------|
| Rimapere, Sauvignon Blanc,<br><i>New Zealand</i>         | 128          | 580           |
| Le Rocher Des Violettes, Chardonnay,<br><i>France</i>    | 138          | 630           |
| Le Rocher Des Violettes, Chenin Blanc,<br><i>France</i>  |              | 720           |
| Hugel et Fils 'Estate', Gewürztraminer,<br><i>France</i> |              | 780           |



*Poppy Table Lamp*



---

---

# CHAMPAGNE

---

---

|                                                | <i>Glass</i> | <i>Bottle</i> |
|------------------------------------------------|--------------|---------------|
| Veuve Clicquot 'Yellow Label' Brut NV          | 160          | 920           |
| Veuve Clicquot 'Yellow Label' Brut NV (375 ml) |              | 480           |
| Veuve Clicquot Rosé 'Imperial' Brut NV         |              | 1180          |
| Ruinart Blanc de Blancs Brut NV                |              | 1480          |
| Dom Perignon 2009                              |              | 2880          |

# ROSÉ WINES

---

---

|                                                                       | <i>Glass</i> | <i>Bottle</i> |
|-----------------------------------------------------------------------|--------------|---------------|
| L'Apostrophe, Domaine Les Terres Promises,<br><i>Provence, France</i> | 138          | 630           |



*Dragonfly Lamp*


Plus 10% service charge

---




*Tiffany Studios*

---



# GIN AND GENEVER



---

|                                | <i>45ml/Shot</i> |
|--------------------------------|------------------|
| Monkey 47 Dry Gin              | 210              |
| Monkey 47 Barrel Cut, Aged Gin | 210              |
| Monket 47 Sloe Gin             | 210              |
| Copper Head Black Batch        | 200              |
| Chase Elegant 48               | 170              |
| Two Moon                       | 150              |
| Four Pillars Navy Strength     | 150              |
| Four Pillars Bloody Shiraz     | 150              |
| Gin Mare                       | 140              |
| Iron Ball                      | 140              |
| The Botanist                   | 140              |
| London no.1                    | 140              |
| Roku                           | 140              |
| Hendricks                      | 140              |
| Applewood                      | 140              |
| Star of Bombay                 | 140              |
| Tanqueray 10                   | 130              |
| Plymouth Gin                   | 120              |
| Bricks                         | 110              |
| Widges                         | 110              |



TIFFANY  
FAVRILE  
GLASS

MADE UNDER THE  
SUPERVISION OF

MR. LOUIS C. TIFFANY

TIFFANY STUDIOS

333 FOURTH AVENUE  
NEW YORK



REGISTERED TRADE MARK



---

# VODKA



|                  | <i>45ml/Shot</i> |
|------------------|------------------|
| Grey Goose       | 140              |
| Ketel One        | 130              |
| Ketel One Citron | 130              |
| Zubrowka         | 130              |
| D1 Potato Vodka  | 120              |
| T&T              | 110              |

# TEQUILA/MEZCAL



|                                  | <i>45ml/Shot</i> |
|----------------------------------|------------------|
| Don Fulano Imperial              | 280              |
| Del Maguey Tobala                | 230              |
| Don Julio Anejo                  | 190              |
| Don Julio Blanco                 | 170              |
| Don Fulano Reposado              | 140              |
| Alipus                           | 130              |
| Montelobos                       | 130              |
| Patron Café XO                   | 120              |
| Avion Silver                     | 130              |
| Jose Cuervo Traditional Reposado | 120              |
| Arquitecto Blanco                | 110              |





*Enamel Bowl*

---



# WHISKEY

---



## BLENDDED SCOTCH

|                   | <i>45ml/Shot</i> |
|-------------------|------------------|
| Monkey Shoulder   | 130              |
| Black Label 12 YO | 120              |
| Chivas 12 YO      | 110              |

## SINGLE MALT SCOTCH

|                         | <i>45ml/Shot</i> |
|-------------------------|------------------|
| Lagavulin 16 YO         | 210              |
| Bruichladdich Laddie    | 180              |
| Auchentoshan Three Wood | 170              |
| Talisker 10 YO          | 160              |
| Glenmorangie Lasanta    | 160              |
| Laphraoig 10 YO         | 150              |
| Macallan 12 YO          | 150              |
| Aberlour 12 YO          | 150              |
| Singleton 12 YO         | 140              |
| Mortlach 12 YO          | 140              |

## INTERNATIONAL WHISKEY

|                             | <i>45ml/Shot</i> |
|-----------------------------|------------------|
| Hakushu Distiller's Reserve | 230              |
| Kavalan Cask Strength       | 240              |
| Michter's Rye               | 150              |
| Michter's Bourbon           | 150              |
| Maker's Mark                | 140              |
| Chita                       | 140              |
| Redbreast Irish Single Malt | 140              |
| Old Ezra Cask Strength      | 130              |
| John Jameson Irish          | 120              |
| Canadian Club               | 120              |



367



225



358




366



373


---



---

# RUM / CACHACA

---



|                        | <i>45ml/Shot</i> |
|------------------------|------------------|
| Ron Zacapa 23 YO       | 160              |
| Matusalem 15 YO        | 150              |
| Bacardi 8 YO           | 150              |
| Kraken Spiced Rum      | 140              |
| Capucana               | 130              |
| Ron Colon Salvadoreno  | 130              |
| Plantation Pineapple   | 130              |
| Aluna Coconut Rum      | 120              |
| Sailor Jerry           | 120              |
| Goslings Black Seal    | 120              |
| Black Tears Spiced Rum | 120              |
| Matusalem Platino      | 110              |

# BRANDY / PISCO

---



|               | <i>45ml/Shot</i> |
|---------------|------------------|
| Hennessy XO   | 280              |
| Hennessy VSOP | 140              |
| Enjoy VSOP    | 140              |
| Ysabel Regina | 140              |
| Machu Pisco   | 120              |

Plus 10% service charge

---



*Laburnum Table Lamp*



---



# BEER



---

|                       | <i>Draught</i> |
|-----------------------|----------------|
| Asahi                 | 90             |
|                       | <i>Bottle</i>  |
| Brooklyn Defender IPA | 90             |
| HK Yau Pale Ale       | 90             |

# SOFT DRINKS



---

|             |    |
|-------------|----|
| Cola        | 70 |
| Ginger Beer | 70 |
| Ginger Ale  | 70 |
| Tonic Water | 70 |
| Soda Water  | 70 |
| Lemonade    | 70 |
| Fresh Juice | 70 |

# WATER



---

|                | <i>Bottle</i> |
|----------------|---------------|
| Acqua Panna    | 60            |
| San Pellegrino | 60            |

Plus 10% service charge

---



*Louis Comfort Tiffany*  
(February 18, 1848 – January 17, 1933)